

MANUAL OFF-LOAD HOOKS - SAFER HANDLE

HOOKS
 SAFETY QUICK RELEASE HOOKS


HMKG 3,5 / 5 / 8 / 12 / 15 HMKGD 3,5 (DUPLEX)

Our safest manual release off-load Hooks.
For fast rescue crafts and other types of boats
with a single point lifting arrangement.

HOOK	HMKG
RING	HLR
SWIVEL JOINT	HSL

SAFER HANDLE

The HMKG hook type is an evolved version of the original Henriksen HMKST standard hook and displays demonstrable advantages in numerous cases. The improvements are made based on our users input and our extensive experience. The HMKG hooks have a downwards facing handle that eliminates the possibility of the lifting ring catching on the handle (when the hook is mounted properly). The hooks also feature a large lifting ring skid zone which makes inserting the lifting ring much easier. The HMKG hook type is safer and easier to use, and at the same time less exposed to accidental damages and following down time.



OPERATION OF AN OFF-LOAD HOOK

Launch

1. When the boat is being lowered down and is close to the water level, remove the safety pin and release the hook handle.
2. When the boat is waterborne, the hook automatically releases the lifting ring.

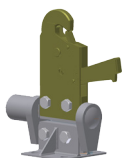
Recovery

1. Prepare the hook for recovery by lifting the handle and inserting the safety pin.
2. Grab the lifting ring and connect it by pushing it into the hook.



LIFTING RINGS

We supply Henriksen original lifting rings for all HMK hooks. They are safe and easy to operate with handles that provide a good grip. We strongly recommend the use of our Henriksen lifting rings with our Henriksen hooks as these have geometry that is designed to fit together.



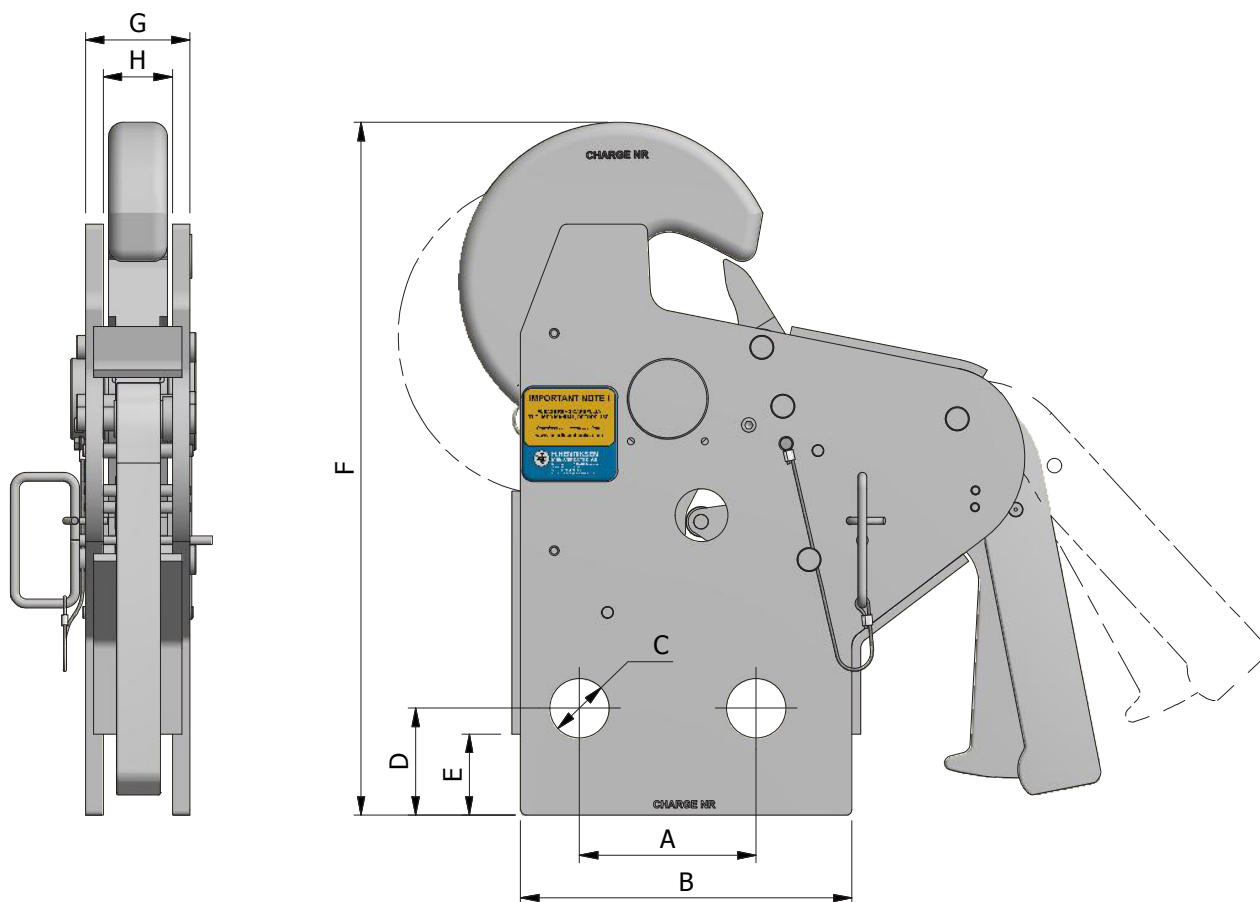
SWIVEL JOINTS

A Swivel joint is mounted between the hook and the lifting frame in order to reduce sideways forces. We recommend installing swivel joints on boats which are frequently used and/or boats that will be launched and recovered in rough sea.

INTEGRATED HENRIKSEN SYSTEM

All Henriksen HMKG hooks can be used in combination with an Integrated Henriksen System (IHS) and a painter hook. We recommend using a IHS system anywhere applicable as it removes the possibility of major operator errors and thereby significantly reduces operational risk.

- All materials used in the Henriksen Hooks are high quality and suitable for marine environment (saltwater proof). The HMKG hooks are made of stainless steel and duplex steel.
- All hooks are delivered in a practical wooden box.



PART NO.	HOOK	SWL	A	B	C	D	E	F	G	H	WEIGHT
HH003050	HMKG 3,5	3 500 kg	100	180	Ø24,5	49	40	352	40	30	11,7 kg
HH003879	HMKGD 3,5	3 500 kg	80	150	Ø24,2	40	37	296	39	29	7,5 kg
HH006180	HMKG 5	5 000 kg	120	225	Ø30,5	60	50	439	47	35	22,1 kg
HH006192	HMKG 8	8 000 kg	120	225	Ø30,5	60	50	439	51	35	25,2 kg
HH000048	HMKG 12	12 000 kg	100	180	Ø30,5	40	0	350	80	50	33,5 kg
HH000050	HMKG 15	15 000 kg	120	225	Ø40,5	73	55	470	71	47	35,4 kg

Materials	High quality stainless steel
Warranty	5 years (When the re-certification and annual inspection is followed)
Documentation	Certificates, Installation-, Operation-, and Maintenance Manual
Packaging	Wooden case
Optional Accessories	<ul style="list-style-type: none"> • Certified bolts and nuts • Henriksen Swivel Joint • Henriksen Lifting Ring • Integrated Henriksen System (IHS)



The HOOKS on this page are all tested and delivered with European Community "MED" CERTIFICATES approved by Det Norske Veritas. They are also approved by Transport Canada (several other certificates are also available on request). Test certificates are based upon IMO / SOLAS.

For more information please visit: www.hhenriksen.com

HENRIKSEN

H. Henriksen AS
Træleborgveien 15
3112 Tjønsberg
Phone: 333 78 400
Mail: hooks@hhenriksen.com