

HENRIKSEN HOOKS

HOOKS
HENRIKSEN HOOKS

BOLT SET

FOR HOOK, ADAPTER AND SWIVEL



U
S
E
R

M
A
N
U
A
L

Rev.: A4

M000581

HENRIKSEN

REDUCING OPERATIONAL RISK

Phone: +47 33 37 84 00
hooks@hhenriksen.com
www.henriksenhooks.com

BOLT SET

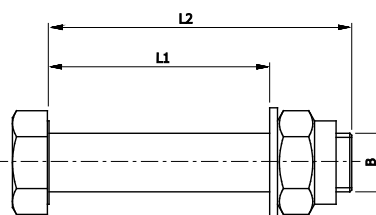
SELECTION

Apply bolts to connect:

- the hook to the swivel joint
- the hook or the swivel joint to the Henriksen adapter
- the hook or the swivel joint to the lifting arrangement of the boat.⁽¹⁾

Part number	WLL	Dimensions (mm) minimum A4-70			Max. torque (Nm)	Between		
		L1 ⁽²⁾	L2	B		hook - adapter	hook - swivel	swivel - adapter
HH000514	1,5	30	50	M12	40	X ⁽³⁾		
HH000276	1,5	46	85	M12	40	X ⁽⁴⁾		
HH000217	3,5	42	75	M24	70		X	
HH000218	3,5	52	85	M24	70	X		X
HH000219	5 / 8	53	90	M30	70		X	
HH000212	5 / 8	73	110	M30	70	X		X
HH000517	12	118	150	M30	70	X	X	X
HH000681	15	75	163	Ø40 / M36 ⁽⁵⁾	70	X	X	
HH000312	15	144	232	Ø40 / M36 ⁽⁵⁾	70	X		X

- (1) The length of the bolt is specified by the boat builder. The bolt should be unthreaded in the lifting cross-section.
- (2) Unthreaded length.
- (3) For adapter plate inside of the hook.
- (4) For adapter plates outside of the hook.
- (5) Stud bolt: shaft Ø40 with M36 threaded ends, EN 1.4462 quality.



NOTE: Remember to place the washer on the locknut side if applicable.