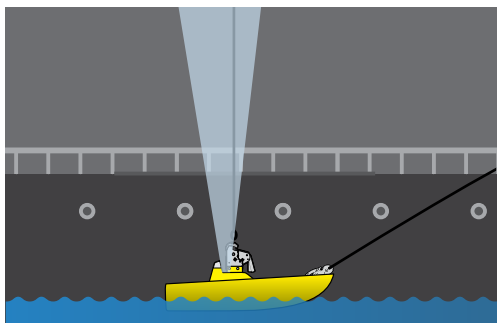


AWARELIGHT

HOOKS

SAFETY QUICK RELEASE HOOKS



AWARELIGHT

One key element during lifting operations is awareness. The view of the crane/davit operator is often limited and distant, increasing the operational risks. This risk can be minimized by providing the crane/davit operator with more information, and thereby increasing operational awareness. With the Henriksen Awarelight and a compatible hook you provide the crane/davit operator, as well as any other supervising personnel, with quick and easy feedback. The hook state is constantly broadcasted via a strong led-lamp, and a quick look is all you need to identify the current state of the hook.

HENRIKSEN AWARELIGHT

Originally developed as part of the liftview system, the awarelight is now also offered as a standalone feature.

The AwareLight lantern has a narrow field of view which gives good feedback to the crane/davit operator, while not disturbing the boat crew. The AwareLight is useful in both the launch and recovery phase.

In the **launch** phase, continuous light signalizes OK, the hook is closed. The crane/davit operator is told that everything is OK with the hook, and can begin to lift the boat.

When the boat closes in on the water line, the hook operator will activate the hook. The awarelight changes from a continuous light, to a 1 Hz flashing light, telling the crane/davit operator that the boat is ready to be lowered into the water.

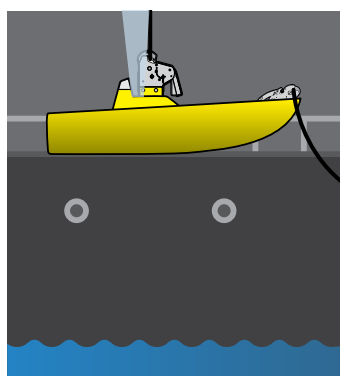
As soon as the boat hits the water and the hook opens, the awarelight changes from 1 Hz flashing to 10 Hz (more rapid) flashing, and the crane/davit operator knows that the hook has opened.

In the **recovery** phase, the AwareLight will emit a constant light to signalize to the crane/davit operator that the boat is ready to attach the hook. When the hook is closed, the AwareLight will change the constant light to a 10 Hz flashing light. When the light changes, the crane/davit operator can start lifting the boat.

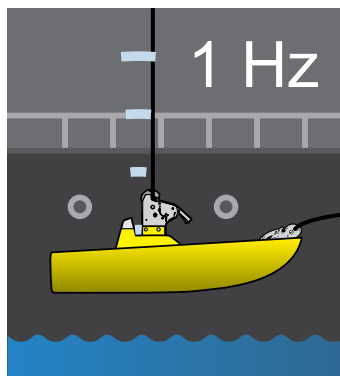
The AwareLight is placed somewhere near the hook on deck. Optionally you can add a second awarelight in the cockpit, giving the coxswain the same feedback.



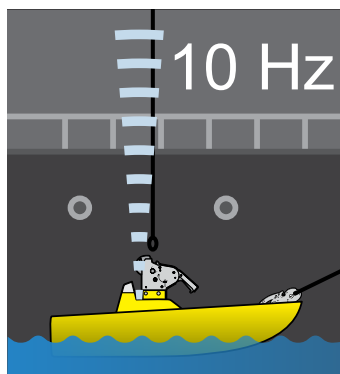
LAUNCH



1. Hook closed

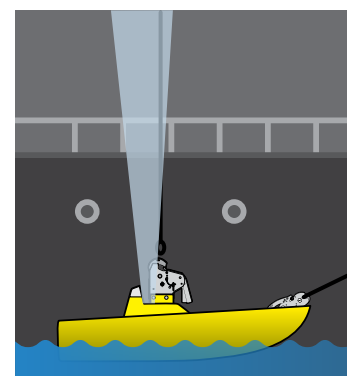


2. Hook activated

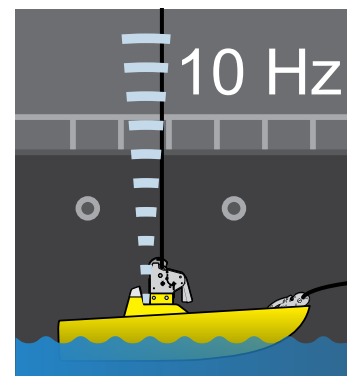


3. Hook open

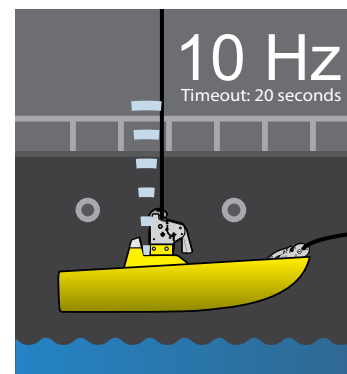
RECOVERY



1. Ready to attach the hook



2. Hook closed, ready for lift



3. Boat is being recovered