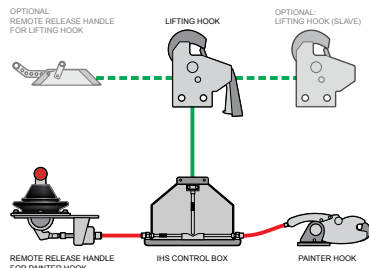


INTEGRATED HENRIKSEN SYSTEM (IHS)

HOOKS

SAFETY QUICK RELEASE HOOKS



INTEGRATED HENRIKSEN SYSTEM (IHS)

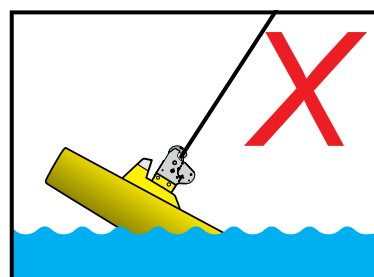
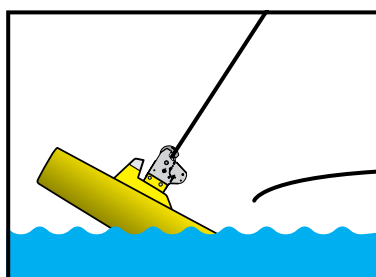
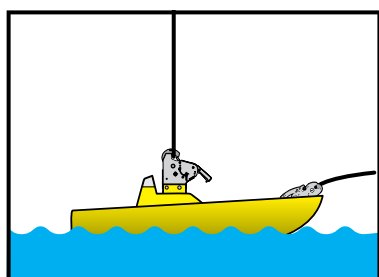
The Integrated Henriksen System is designed to enhance the safety during the launch of a rescue / work boat.

HOOK	ALL
RING	HLR
SWIVEL JOINT	N/A

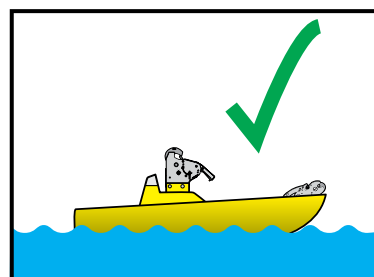
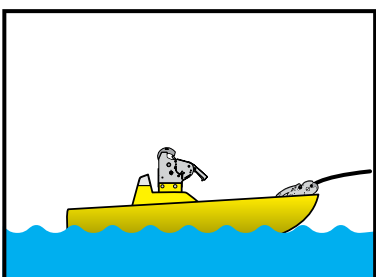
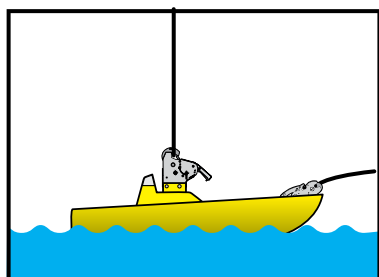
The Integrated Henriksen System (IHS) is a safety system that increases the safety of lifting operations where a painter hook is used in combination with a lifting hook, and especially when the mothership is moving. One of the most dangerous things that can happen when lifting in speed is releasing the painter hook before the lifting hook which will cause the daughtercraft to be towed by its lifting hook. Using a IHS System ensures that the lifting hook has opened before the painter hook can release the painter line.

The IHS is available both as an electric or as a mechanical system, see the illustrations on the next page. The electric system uses flexible electrical wires to connect the components and is controlled with a compact and intuitive control panel. Release of both painter hook and lifting hooks is done with the push of a button. The electric system is easier to use, and takes less room in the boat cockpit panel, but this is not the only advantage. The electric wires are much easier to route and install in the boat. The electrical wires will also not move around when used.

The mechanical version is connected via stainless steel pull/push cables and a painter hook release handle. The lifting hook itself can be opened with a handle on the hook, or be remotely released via an optional hook release handle.

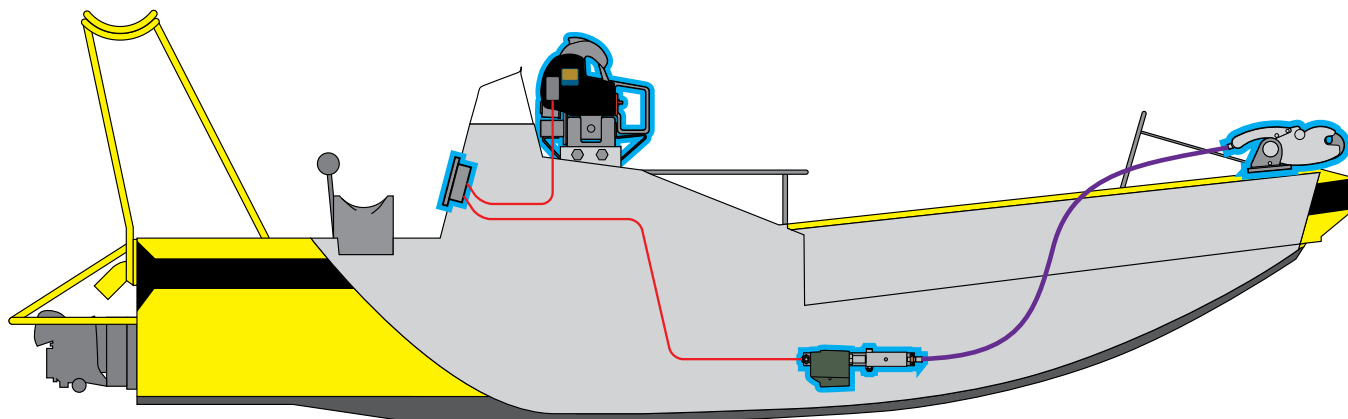


Without IHS:
A dangerous procedural error is possible: Release of painter hook before lifting hook

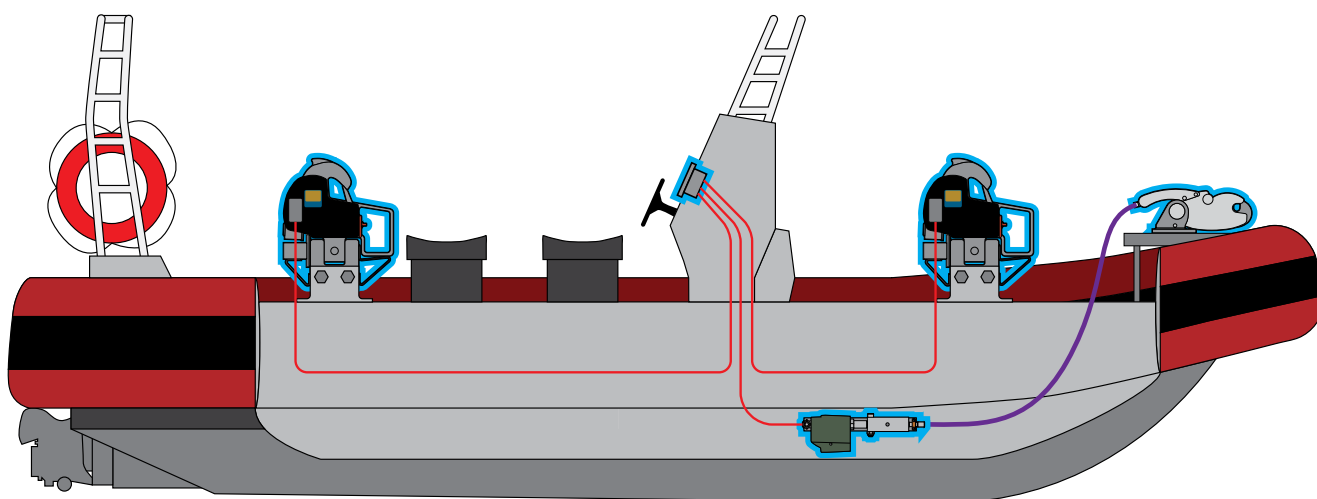


With IHS:
This possibility is removed and lifting hook has to be opened before the painter hook.

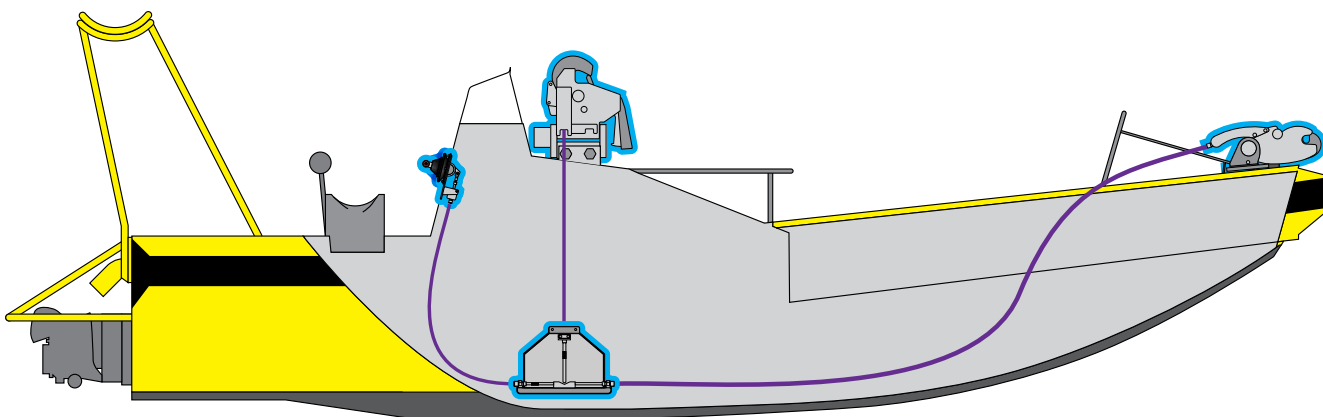
Electric



Electric Twin



Mechanical



The HOOKS on this page are all tested and delivered with European Community "MED" CERTIFICATES approved by Det Norske Veritas. They are also approved by Transport Canada (several other certificates are also available on request). Test certificates are based upon IMO / SOLAS.

For more information please visit: www.hhenriksen.com

HENRIKSEN

H. Henriksen AS
Træleborgveien 15
3112 Tønsberg
Phone: 333 78 400
Mail: hooks@hhenriksen.com